



a Worker-Owned Cooperative



Corrections and Clarifications - November 2009

Istanbul Aran

(page 93)

Under SLEEVES:

"Change to larger needle, k1, **p1**, then begin Chart 3 at the point indicated. Complete Chart 3, ...to **2** stitches from the end, then **p1**, k1."

(page 95)

"On the 4th row of Chart, increase as follows: k1, **p1**, m1, work to last **2 sts**, m1, **p1**, k1. Work the increased sts into pattern, always leaving **2** seam sts at beginning and end of row..."

East Putney Aran

(page 17)

Under **Shape Neck**:

(after italics) "On next RS row, work 31 (35, 40) sts in pattern, k2tog, p1, **k2**, **p1**. With second ball of yarn, **p1**, **k2**, p1, ssk, work in pattern to end."

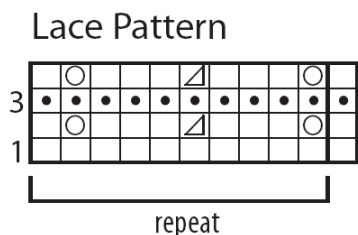
(page 18)

"Medium size uses only Chart 2"

Meadow Lark Lace

(page 65)

Revised Chart



Pebble Yoke Sweater

(page 26)

"Row 21: k4 (6, 6), *kfb, k7 (**6, 6**);"

Evening Shadows Afghan

(page 103)

"Work tiers 1 and 2 **eleven** more times, or until afghan measures 2" / 5 cm less than desired length.

Repeat Tier 1, then:

Work Top Triangles (WS):

Row 1: Pick up and p 9 sts along previous tier, turn.

Row 2 and all even rows: K to end, turn.

Row 3: P2tog, p7, p2tog, turn.

Row 5: P2tog, p6, p2tog, turn.

Row 7: P2tog, p5, p2tog, turn.

Row 9: P2tog, p4, p2tog, turn.

Row 11: P2tog, p3, p2tog, turn.

Row 13: P2tog, p2, p2tog, turn.

Row 15: P2tog, p1, p3tog, turn.

Row 17: P2tog, p3tog, turn.

Row 19: P2tog."

Lotus Blossom and Lightning Bolt Hats

(page 97)

Revised Chart 2 for Lotus Blossom

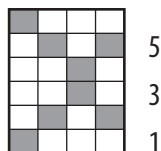


Chart 1 for Lightning Bolt: the left-most stitch in Row 14 should be in CC.

(page 98)

"Weave in loose ends, fold lining... with larger needle **and MC**."