

Errata Sheet: September 2007
Corrections to the First Edition of *The Green Mountain Spinnery Book*

Page xi – The author of the essay A Good Yarn is Margaret Klein Wilson.

Page 7 Spinnery Jacket -- End of “collar” paragraph: Work straight for **7 rows or desired length**.

Page 8 Cozy Vest -- Paragraph under "JOIN PANELS" should **not** read "Without gusset:"

Page 23 Rosemary’s Little Sweater – (Cable Pattern, Sizes 2, 4, & 6) Row 3: K2, p1, sl 1 st onto cn and hold in front of work, k1, p1, then k1 from cn, p1; knit to within 7 sts of end of row; p1, sl 2 sts onto cn and hold in back of work, k1, then **(p1, k1)** from cn, p1, k2.

Page 24 Rosemary’s Little Sweater – End of “Sleeve” paragraph: “Work straight until sleeve measures 7 (7½, 9, 10, 10) inches or 2 inches less than desired length.”

Page 26 Green Mountain Gardens -- At the beginning of the center column, text has been added to clarify neck shaping: “Center Front steek sts have been eliminated. **A smaller steek for the neck opening will now be knit entirely in pattern as established.** Begin and end rounds at marker now, maintaining patterns as before.”

Page 27 Green Mountain Gardens -- The chart pictured is the **Sleeve Chart**.

Page 28 Green Mountain Gardens – Call or write for the colorway charts for “Daisies & Delphinium” and “Winter Woods”

Page 39 Candace’s Eyelet Sweater -- The last sentence of the first column should read: Beginning at the neck edge, join, **using a tapestry needle** to work the Kitchener Stitch . . .

Page 41 Moriah’s Wildflower Sweater -- In the Neckband paragraph, “Continuing in Seed Stitch, pick up 18 (20, 22) sts along neck edge, work the **37 (41, 45)** sts from back neck, pick up 18 (20, 22) sts along left neck edge, work the 8 sts of left Front Band.”

Page 43 Cable Cardigan -- Under "Divide for Armholes": "place rem 45 (52, 58, 63, **69**) sts on a holder."

Page 46 Norwegian Roses -- Color A is always the first color listed in each colorway.

Page 49 Norwegian Roses -- Charts for Right and Left front yokes (see end of these notes for chart revisions)

Page 52 Cable Weave Pullover -- Both versions, Cast on and knit the welt pattern using a size 6 needle. Change to size 7 needle and continue working lower body.

Page 53 Cable Weave Pullover Chart-- beginning and ending marks should be as follows: for size 34 between sts 2-3 and sts 40-41; size 46 between sts 8-9 and sts 34-35; sizes 42 & 54 between sts 13-14 and sts 29-30

Page 63 Putney Aran Pullover -- Chart A should begin in the 9th st from the right. Chart C should end in the 9th stitch from the left, making 24 sts for each chart. Charts A and C should have a 4 stitch back crossing cable on rows 7, 11, and 15 in the center of the diamond pattern. (see end of these notes for chart revisions)

Page 67 Lace Cardigan - In Chart B, row 16, there should not be 2 "YO"s together. The Chart should read **K2 tog, K 1, YO...**

Page 70 Stars and Bars -- Pullover and Cardigan Back, in the 3rd line from the end, should read, "Neck: **work** rem 12 (14, 14, 17, 19) sts for..."

Page 70 Stars and Bars -- Pullover Front, after binding off at the beginning of the RS row, work all the way to the end. Then bind off the 3 (4, 4, 4, 4) sts for Child, 8 (10, 10, 10, 15) sts for Adult at the beginning of the next row.

Page 78 & 80 Rebecca's Little Sweater and Baby Bonnet Charts -- Please note that the stitch **repeat** in all charts is **6 stitches**, regardless of where in the chart you begin and end.

Page 82 Welt Cap – The opening text of the pattern should read:
CAST ON 72 (76), 80 (84, 88) sts with **Main Color (MC)** using circular needle. Join sts, making sure sts are not twisted on needle. Place marker on needle **and knit 1 round with MC. Continue in Color A: knit 1 round, purl 2 rounds.** This completes one welt. Continue working on the hat band with the following rounds:

*MC: knit 2 rounds

Color B: knit 1 round, purl 2 rounds

MC: knit 2 rounds

Color A: knit 1 round, purl 2 rounds

Repeat from * one more time for Child, 2 more times for Adult.

All sizes: knit one round in MC and then begin dec for top of cap.

Page 83 Mittens – Please note the pattern describes mittens knit using only one color. We do, however, encourage you to experiment with your “stash” colors to add stripes or flecks as our knitter did with the models pictured on page 80.

Page 87 Eric's Glovelets -- 1st paragraph in the second column ("Continue working...") should end with **Work three more rounds even.**

Page 90 IBH's Toasty Socks – The last sentence of the first paragraph of the “Instep and Foot” section should read: “Work across instep, following Rib Pattern (**k3, p2, k6, p2, k6, p2, k3**).

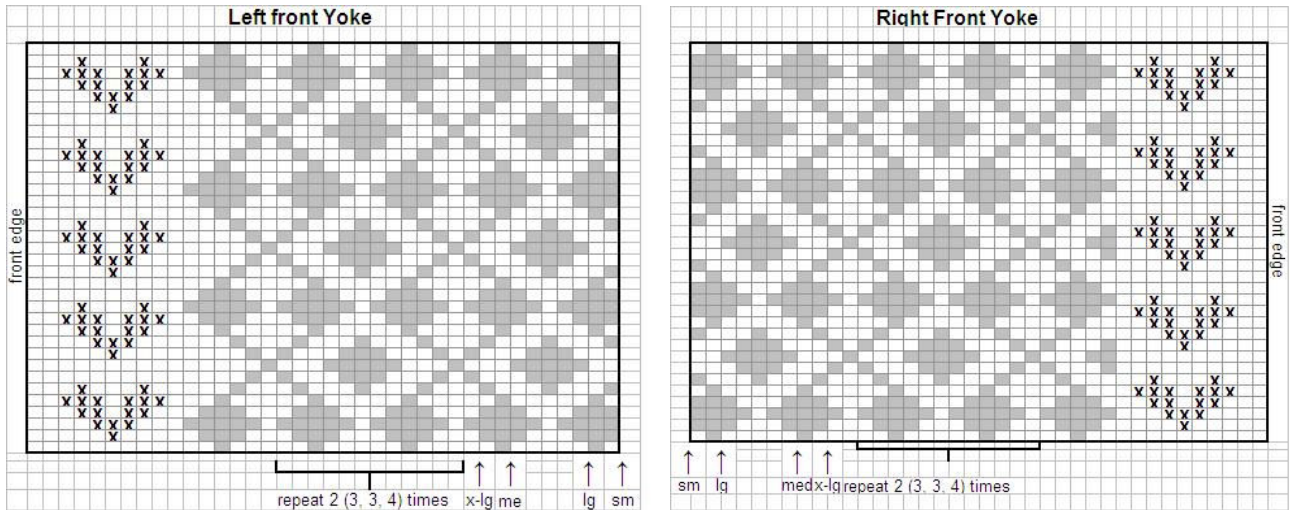
Page 99 Cotton Comfort The top four yarn colors are mislabeled and **should** read as follows: **suede (6-sd), winter beech (6-wb), silver (6-s), unbleached white (6-uw).**

Page 99 Yarn Over – The correct yardage per skein is 155 yards.

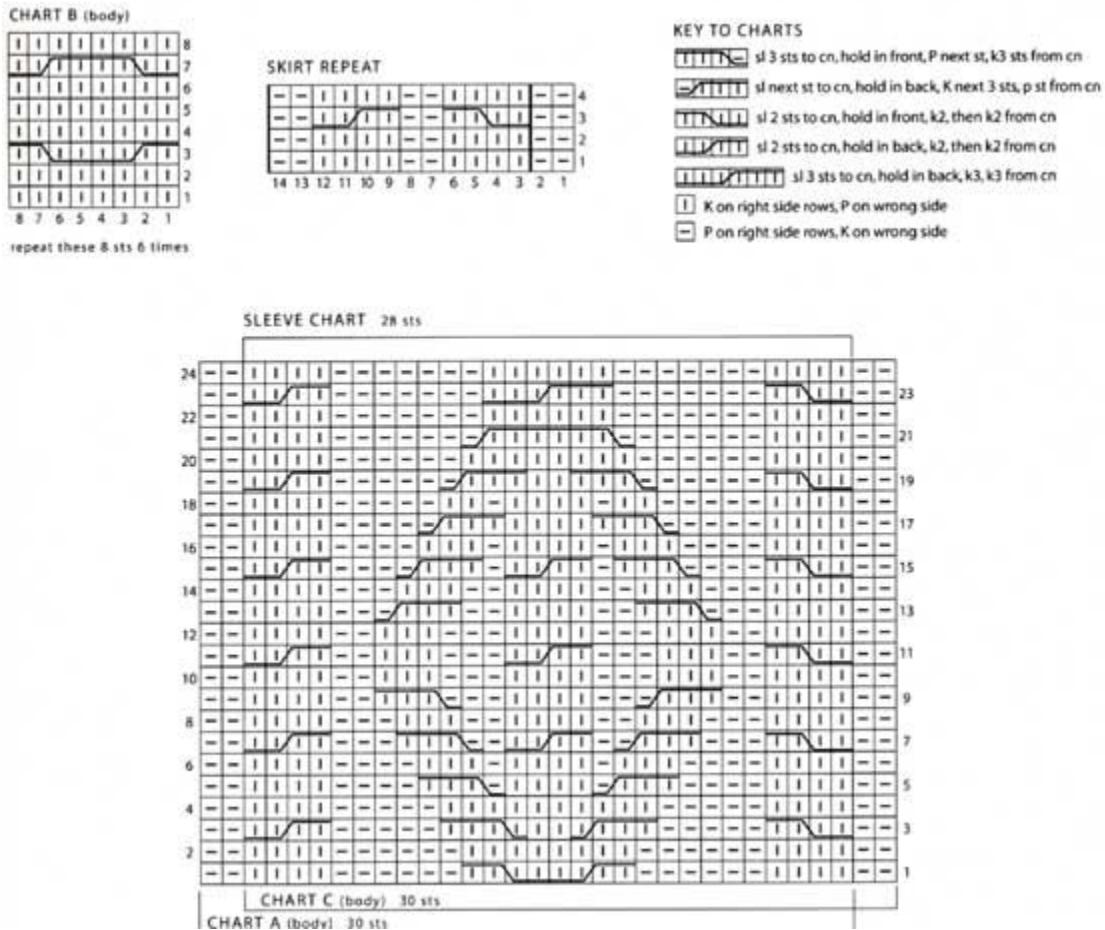
Page 101 Stained Glass Pullover -- MM yarn requirements are in the wrong column.

Page 103 Model Knitters -- Claire Wilson knit several of the models pictured.

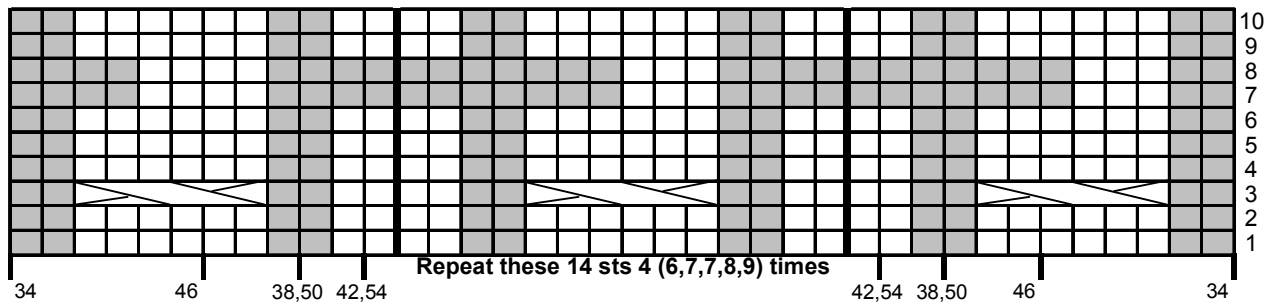
Norwegian Roses Revised Charts:



Putney Aran Tunic: Revised Chart A/C:



Cable Weave Pullover Revised Chart:



key to chart



sl next 3 sts to cn, hold in front, k3, k3 from cn



k on right side rows, p on wrong side



p on right side rows, k on wrong side