

GREEN
MOUNTAIN
SPINNERY



P.O. BOX 568 • PUTNEY, VT 05346
WWW.SPINNERY.COM • 800.321.9665

WINTER KALEIDECOPE

designed by larisa demos

Kaleidoscopes have been used to create and play with luminous symmetry for more than 3 centuries. This stylized design allows you to experiment with color, bringing a seasonal palette to life. The complex tweed of Spinnery Mewesic yarn will enrich your three contrast yarns, providing pops of color in myriad hues for breathtaking results.

FINISHED MEASUREMENTS: 18.5" circumference 8.5 deep" blocked and slightly stretced

GAUGE: 24 sts and 26 row per 4" in pattern, check gauge and adjust needle size if necessary.

MATERIALS: 1 Skein MC & 1 skein each of CC1, CC2 and CC3 in New Mexico Organic, Cotton Comfort, Alpaca Elegance or Mewesic

NEEDLES: US 5 /3.75 mm & US 7 /4.5 mm 16" circular needle and dpns or longer circular needle for magic loop

NOTIONS: Stitch markers

GLOSSARY:

K2tog = knit 2 sts together SSK = slip 2 sts one at a time as if to knit, put tip of left needle through front both sts and knit them together.



INSTRUCTIONS:

Using the US 5 /3.75mm needle and MC cast on 112 sts. Place marker, join to work in the round, being careful not to twist sts.

Work in K2, P2 ribbing for 1.5" / 3.8 cm

With the US 7 /4.5 mm needles, Knit 3 rounds

Work Chart A

Knit one rnd in MC

Work Chart B

Work one rnd in MC

Work Chart C

Knit 3 rnds with MC

Begin Decreases - change to double point or magic loop when necessary

Round 1- K1, SSK, K11, K2tog - 7 times - 98 sts

Round 2, 4, 6, 8, 10 Knit

Round 3 -K1, SSK K9, K2tog -7 times - 84 sts

Round 5 - K1, SSK K7, K2tog - 7 times - 70 sts

Round 7- K1, SSK, K5, K2tog - 7 times - 56 sts

Round 9 -K1, SSK, K3, K2tog -7 times - 42 sts

Round 11- K1, SSK, K1, K2tog - 7 times - 28 sts

INSTRUCTIONS:

Round 12- SSK, K2tog - 7 times - 14 stitches

Break yarn, leaving a long tail, thread through remaining sts, pull the opening closed, weave in ends.

Chart A

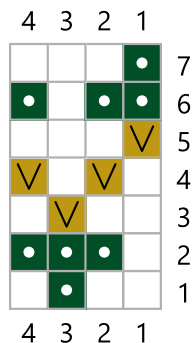
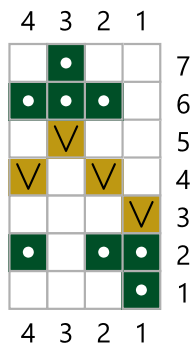


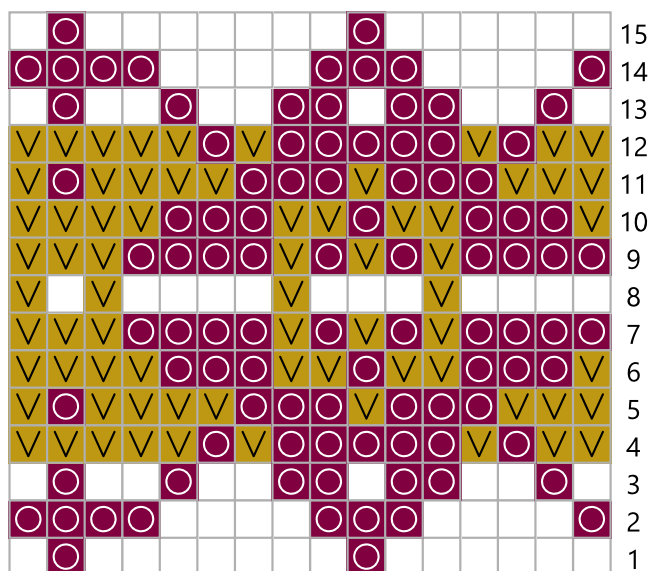
Chart C



Key

- A
- atlantis
- ▽ B
- mean mr mustard
- C
- purple rain
- MC

Chart B



FINISHING:

Your hat will be softer and more beautiful after hand-washing in warm water with a mild soap or detergent. Rinse in warm water. Then roll in a towel to remove excess moisture or spin dry in a washing machine (for 10 seconds only.) Lay flat to dry.

GREEN MOUNTAIN SPINNERY

PO Box 568 Putney, Vermont 05346-0568

phone 802.387.4528 • fax 802.387.4841 • email spinnery@spinnery.com

©Copyright: Green Mountain Spinnery, Inc., 2019

WWW.SPINNERY.COM • 800.321.9665